
Lancia Ypsilon alternatively as mild hybrid

Lancia is now also offering the new Ypsilon in Italy as a mid-hybrid as an alternative to the electric version. The limited "Cassina" launch edition is powered by a 100 hp (74 kW) 1.2 three-cylinder engine, which is supported by a 48-volt system. The belt-driven alternator enables purely electric starting and short periods of driving on electricity, for example in stop-and-go traffic. The Lancia Ypsilon Cassina Hybrid has a newly developed six-speed dual-clutch gearbox, accelerates from 0 to 100 km/h in 9.3 seconds and has a top speed of 190 km/h. The Lancia Ypsilon is expected to come to Germany next summer. (aum)

Images for article



Photo: Autoren-Union Mobilität/Stellantis



Photo: Autoren-Union Mobilität/Stellantis

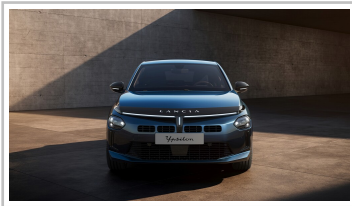


Photo: Autoren-Union Mobilität/Stellantis

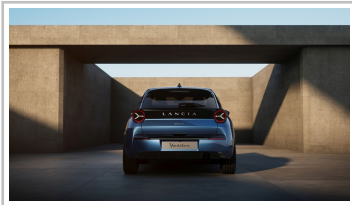


Photo: Autoren-Union Mobilität/Lancia



Photo: Autoren-Union Mobilität/Stellantis



Photo: Autoren-Union Mobilität/Stellantis
